

Rates
2026



Package Guide KindeRdam

Rotterdam Centre

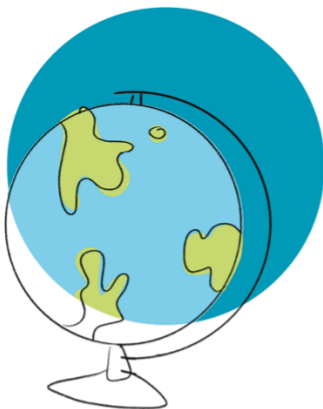
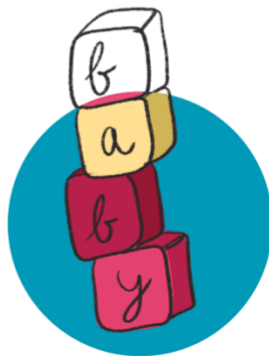
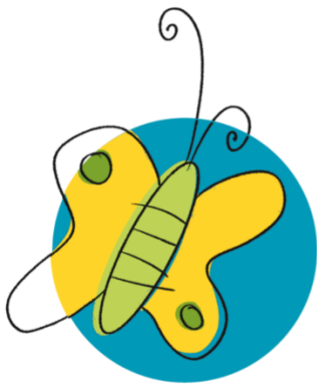


Table of Contents

1. Introduction
2. Daycare
3. Toddler Care
4. Out-of-School Care
5. Holiday Care without After-School Care
6. Exchange Service
7. Holiday Weeks and Closing Dates
8. Calculation of childcare times BSO
9. Parent Contribution, Costs and Invoice





1. Introduction

In this PackageGuide you will find everything about our different childcare packages and the associated rates. All our BSO and daycare packages include:

- nappies, lunch, healthy snacks, daily fruit, drinks,
- outings,
- preschool education for two- to four-year-olds,
- play and craft materials,
- workshops,
- care during pre-announced school closure days (if you have entered into an agreement for that weekday)
- BSO holiday destination during the school holidays.

How much will I be paying for the care?

- How much you'll pay for childcare will depend on the number of days or hours you need childcare and the location you opt for.
- The rates quoted in this PackageGuide are gross prices. Are you entitled to a childcare allowance? Then you'll be entitled to a refund for part of the costs from the Tax Authorities. You can calculate your own contribution on toeslagen.nl/proefberekening.
- You can also find more information about the childcare allowance on our [website](#).

Some locations have a different PackageGuide

This Package Guide applies to the KindeRdam Rotterdam Centre locations. Different packages and rates apply to our other KindeRdam locations. We have a separate PackageGuide for this.





2. Daycare (KDV)

Opening hours

Our daycare centres are open from 07:30 to 18:30 hours as standard. We offer extended care in the morning and/or afternoon at some of our locations. You can find the opening hours for your child's location, or your preferred location, via the [locatiepagina](#) on our website.

52 week package

Kipstraat, Van Brakelstraat, Mariniershof & Nieuwstraat €12.16 per hour

Groot Handelsgebouw €12.42 per hour

Childcare throughout the entire calendar year, with the exception of public holidays and KindeRdam's annual study day. This is our standard package, at the lowest hourly rate.

- **Please note:** we don't issue refunds if you cancel any sessions.

48 week package

Kipstraat, Van Brakelstraat, Mariniershof & Nieuwstraat €12.52 per hour

Groot Handelsgebouw €12.80 per hour

This package offers 48 weeks of childcare per calendar year, with the exception of public holidays and KindeRdam's annual study day. If you start or stop this care package during the calendar year, the 4 weeks to be cancelled will be calculated on a pro rata basis. We will also provide you with a final statement per calendar year. We will send out an additional assessment if there are too few cancelled hours.

- **Please note:** You will need to cancel your child's sessions in the OuderApp (ParentApp) at least 4 weeks *before* your holiday. Have you not done so on time? Then the cancelled days will not be deducted from the weeks to be cancelled.

40 week package

Kipstraat, Van Brakelstraat, Mariniershof & Nieuwstraat €13.47 per hour

Groot Handelsgebouw €13.77 per hour

Childcare for 40 weeks per calendar year. No childcare during the holiday weeks set by KindeRdam, public holidays and KindeRdam's annual study day.



Flexible childcare or half-day care

We offer the possibility of flexible childcare or half-day childcare on Wednesdays and/or Fridays at some of our locations. Do you want to know whether there are options for this type of childcare at your desired location? Then send an email to the Customer Advice & Planning department: klantadvies@kinderdam.nl.

Extra day(part)

The purchase of an extra day (only per day(part), not by the hour) will be invoiced separately. The approval of a request for an extra day(part) will depend on the group's occupancy level, whereby the legally required professional-child ratio (BKR) will be prevailing. This unfortunately means it won't always be possible to realise your request. Do you not need the extra day after all? Then you can cancel this up to 48 hours in advance. We will charge you for the day (or part of the day) if you cancel within 48 hours of the start of this extra day (or day(part)).





3. Toddler Care

Opening days, opening times and closing days

The toddler care opening times at the Rotterdam Centre locations are from 08:45 to 12:45. Besides the official holidays and KindeRdam's study day, the toddler playgroups are also closed during the holiday weeks set by KindeRdam. Some toddler playgroups are closed on school closing days, which are listed in the school guide. You can enquire about these at the location. You won't be eligible for a refund for days when the toddler playgroup is closed.

Toddler care

€ 11.23 per hour

Toddler care during school weeks.

A lower parent contribution or no parent contribution in the City of Rotterdam

The toddler care policy will be determined per municipality. Do you have a VVE (Early Childhood Education) indication, a CJG (Youth & Family Center) form, or a form for Extra Playing and Learning? Then your child can go to toddler care for extra day parts. Please email the Customer Advice & Planning department for details per location: klantadvies@kinderdam.nl.





4. Out-of-School Care (BSO)

After-School Care (NSO)

NSO opening hours

We refer to the care children receive after school hours and during school weeks as After-School Care (NSO). This care is often also referred to as out-of-school care. Our BSO locations are open from the end of the school day until 18:30 as standard. Most of our locations offer Pre-School Care (VSO) and/or extended care in the afternoon. You can find the opening hours for your child's location, or your preferred location, via the [locatiepagina](#) on our website.

52 week package

€ 11.95 per hour

Childcare throughout the entire calendar year, also including the holiday weeks set by KinderRdam and any pre-announced school closing days (if you have concluded an agreement for that particular weekday). There will be no childcare on public holidays and on KinderRdam's annual study day.

- **Please note:** this package will register your child for childcare as standard on the contractually agreed childcare day during the set holiday weeks. Does your child not need childcare during the holiday on that/those day(s)? Then we'd like to ask you to cancel your child's childcare **4 weeks before the start of the holiday**.

48 week package

€ 12.50 per hour

Childcare for 48 weeks per calendar year (including 8 weeks of holiday childcare) and on the pre-announced school closing days (if you have concluded an agreement for that particular weekday). The 8 holiday weeks will be calculated on a pro rata basis if you start or stop this childcare package at some point during the calendar year. This may result in an additional charges.

- **Please note:** this package will not register your child for childcare as standard on the contractually agreed childcare day during the set holiday weeks. You will need to register (confirm) or cancel (withdraw) your child for an upcoming holiday in the OuderApp(ParentApp) at least 4 weeks before each holiday. Have you not done so on time? Then your child will automatically be cancelled for the holiday weeks. You will then not be able to use childcare during the holiday. Are you still in need of childcare? Then you can request an extra holiday day at an extra charge.



40 week package

Nieuwstraat, Mariniershof, Eendrachtsweg, Van Brakelstraat €13.98 per hour

Childcare for 40 weeks per calendar year, including on the pre-announced school closing days (if you have concluded an agreement for that particular weekday). You will therefore **not** have access to childcare during the holiday weeks set by KindeRdam.

Flexible Childcare

We offer flexible childcare at some of our locations. Do you want to know whether there are options for this type of childcare at your desired location? Then send an email to the Klantadvies & Planning (Customer Advice & Planning) department: klantadvies@kinderdam.nl.

Extra day(part)

Any extra days taken (only per day(part), not by the hour) will be invoiced separately. The approval of a request for an extra day(part) will depend on the group's occupancy level, whereby the legally required professional-child ratio (BKR) will be prevailing. This unfortunately means it won't always be possible to realise your request. Do you not need the extra day after all? Then you can cancel this up to 48 hours in advance. We will charge you for the day (or part of the day) if you cancel within 48 hours of the start of this extra day (or day(part) day).

Pre-School Care (VSO)

PSC € 11.95 per hour

Pre-School Care during the school weeks and on the pre-announced school closing days (if you have concluded an agreement for that particular weekday). You will therefore not have access to childcare during the holiday weeks set by KindeRdam from 07:00. You can find the opening hours for your child's location, or your preferred location, via the [locatiepagina](#) on our website.





5. Holiday Childcare without After-School Care

12 week holiday package

€11.95 per hour

You can purchase this holiday package for a minimum of 1 year, from the start date of the contract and for a minimum of 2 fixed days per week. You will have access to 12 weeks of childcare during the holiday weeks set by KindeRdam. This package does not offer childcare during school closing days.

What is a school closing day?

Schools may, at times, extend a holiday with an extra day(part) (either at the beginning or end). If this day (or days) fall (or falls) outside of the holiday weeks mentioned in this PackageGuide, this will be a school closing day and not a holiday.





6. Exchange Service

Children attend daycare or out-of-school care on their regular days. This consistency is important for the stability of the groups, the emotional security of the children, and therefore for the overall pedagogical quality of our childcare.

If your child cannot attend on a scheduled day, we offer the option to exchange that day for another moment.

- **Please note: this is a service and not a right.** Exchanges depend on group availability, with the legally required staff-to-child ratio (BKR) being the determining factor. This means your request for (additional) care may not always be possible. We will not add extra staff to accommodate exchange requests.

Exchanges are not possible for preschool (peuteropvang). For daycare (KDV) and out-of-school care (BSO), we follow specific rules to help us manage group occupancy effectively. By notifying us of your child's absence in time, you help us create more opportunities for other families to exchange days.

The Rules

- You may exchange up to 44 childcare hours per child per calendar year.
 - For before-school care, there is a maximum of 6 hours per calendar year for reporting absences.
- Exchange hours are linked to the individual child and cannot be transferred to another child.
- Exchange hours can only be used within your child's own group.
- You will receive exchange hours for a cancelled day only if the absence is reported at least 7 days (of 24 hours) before the scheduled day in Konnect (the parent portal/app).

Example: If your child is scheduled for care on 26 June, starting at 7:30 a.m., you must report the absence before 19 June at 7:30 a.m. to receive exchange hours.

If you report later than 7 full days in advance, you will not receive exchange hours.

- **Note:** For 48-week daycare packages, exchange hours are earned when the absence is reported **between 28 and 7 days** before the scheduled day.
- An absence day can be used as an exchange day from 28 days before the cancelled day up until the end of the calendar year.
- The accumulated exchange hours can be used for any product type. For example, a cancelled BSO holiday day can be used for after-school care or a school closure day.
- No exchange hours are earned for school closure days, KindeRdam study days, or official public holidays.
- Any unused or unusable exchange hours expire automatically at the end of the calendar year or at the end of your childcare agreement.



- When a child moves to a different type of care, any earned exchange hours expire. For example, when a child moves from daycare to out-of-school care, the exchange balance resets and new hours can be accumulated.
- If approved exchange hours are later cancelled in time (according to the same 7-day rule), the corresponding hours will be credited back to your account.





7. Holiday Weeks and Closing Dates

Please see details of the official school holidays below. The toddler playgroups are closed during the holiday weeks set by KindeRdam and on any possible school closing days specified by the school in the school guide. You can enquire about this at your location.

No money will be refunded for the public holidays listed below. You will not be able to exchange these days either.

Holiday weeks in 2026

Christmas holidays:	2 January	Summer holidays:	20 July to 28 August
Spring holidays:	16 February to 20 February	Autumn holidays:	19 October to 23 October
Easter holidays:	27 April to 8 May	Christmas holidays:	21 December to 31 December

* Please note: the Easter holidays are made up of 1 week set by the government and 1 week set by KindeRdam. We have opted for this, as most of the schools KindeRdam works with have 2 weeks Easter holidays. Does your school have a different holiday schedule? Then please contact our Klantadvies & Planning (Customer Advice & Planning department): klantadvies@kinderdam.nl.

Public Holidays and Study Day in 2026

New Year's Day:	Thursday 1 January
Easter Monday:	Monday 6 April
King's Day	Monday 27 April
Liberation Day:	Tuesday 5 May
Ascension Day:	Thursday 14 May
Whit Monday:	Monday 25 May
Christmas Day:	Friday 25 December
New Year's Eve*:	Thursday 31 December, from 17:00
Study Day*:	Friday 2 October

*Reimbursement of childcare hours will be automatically refunded afterwards (at the end of the month).





8. Calculation of child care times BSO

The BSO starting time is set per school/per group every calendar year. KindeRdam regularly checks in with the schools to find out whether the starting times may have changed. We will subsequently incorporate any changes in times in our systems, which will allow us to calculate the new start times.

Continuous schedule or exchange of short/long days

If a school switches to a continuous schedule at the beginning of a school year or during a school year, or exchanges short/long days, the BSO starting time will change too. In that case, we will change the hours on your invoice from the beginning of the changed school times.

Changed school finishing time

If a school changes its finishing time at the start of the school year or during a school year, for example fifteen minutes earlier or later, we will change the hours on your invoice from the beginning of the changed school times.

School closing days

School closing days are calculated in the annual hours of after-school care (NSO). An average per day is subsequently calculated from this. You will only pay for the right to a school closing day if you have entered into an agreement for that specific weekday.





9. Parent contribution, costs and invoice

A lower or no parent contribution in the City of Rotterdam

The City of Rotterdam believes it's important for all children in the city aged 2 to 4 years to enjoy the opportunity to develop to the best of their ability. Some children are therefore allowed some extra Playing and Learning time. Only children who have received this referral from the CJG (Youth and Family Center) are eligible for the extra time. KindeRdam has agreed with the City of Rotterdam that we will give priority to children with an extra Playing and Learning indication. Please email the Klantadvies & Planning (Customer Advice & Planning) department via klantadvies@kinderdam.nl for details.

Do you use debt counselling services?

Then the Municipality of Rotterdam can offer free childcare or childcare for a lower parental contribution, depending on your personal situation. This only applies to parents who demonstrably make use of debt rescheduling based on the Municipal Debt Counselling Act or the Natural Persons Debt Rescheduling Act.

Calculate your nett costs on toeslagen.nl

Our hourly rates are gross: in most cases parents will receive some of this back via their childcare allowance. You can easily calculate your net childcare costs on toeslagen.nl/proefberekening. Or download the app via toeslagen.nl.

KindeRdam Invoicing

We will send you our invoice around the 15th of the month.

- Do you have a VSO or 40 week package? Then you'll receive the same invoice every month: 1/12 part of the annual amount. It's not possible to temporarily cancel the months of July and August.
- Do you have a 48 week package, a 52 week package, or a 12 week holiday package? Then you'll receive the same invoice every month: 1/12 part of the annual amount.
- Will your child be attending toddler care? Then your annual costs will be invoiced in 10 or 12 monthly instalments. It's not possible to temporarily cancel the months of July and August.

Do you have any questions, or would you like to get in touch with the Customer Advice & Planning department?
Then send us an email: klantadvies@kinderdam.nl or call: 010 - 44 300





Disclaimer

The contents of this PackageGuide have been compiled with the greatest of care. KindeRdam expressly precludes any liability for inaccuracies and incompleteness. KindeRdam reserves the right to make exceptions to the rules in this PackageGuide in very specific situations, when unforeseen cases and situations arise.

